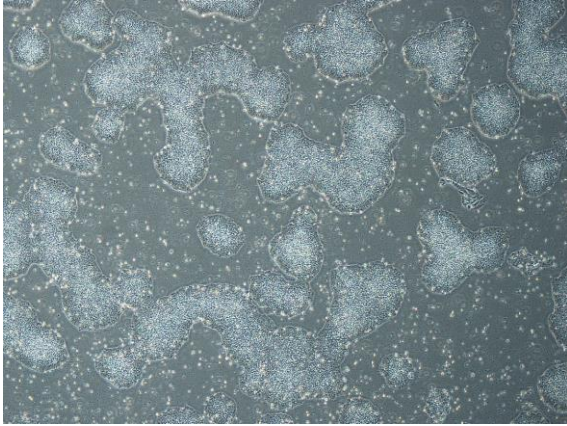
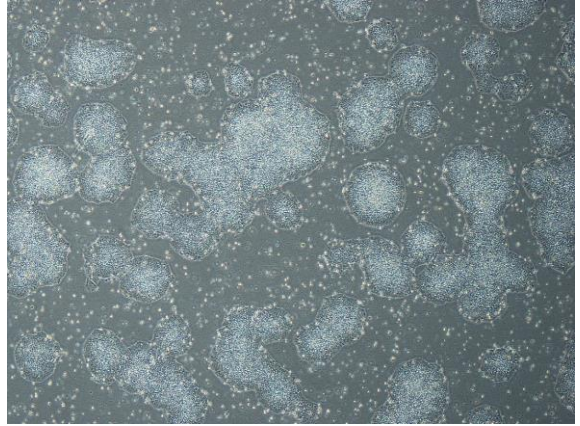


【 CiRA-j-1087 】 Morphology of iPSC colonies

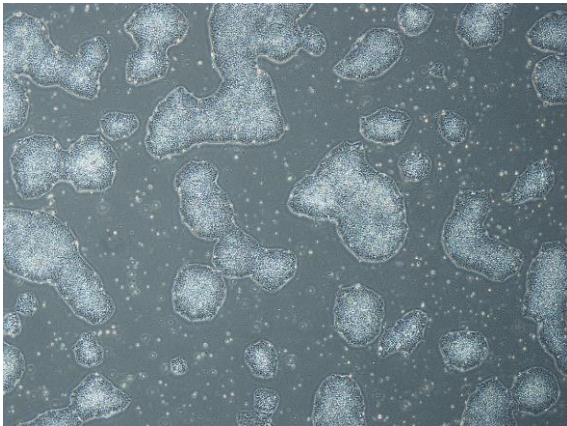
CiRA-j-1087-A: passage-3



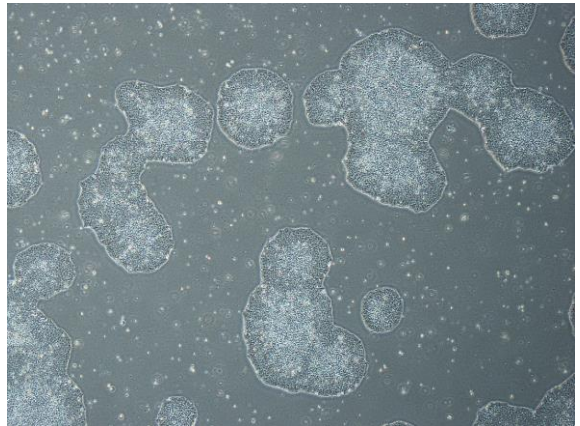
CiRA-j-1087-B: passage-3



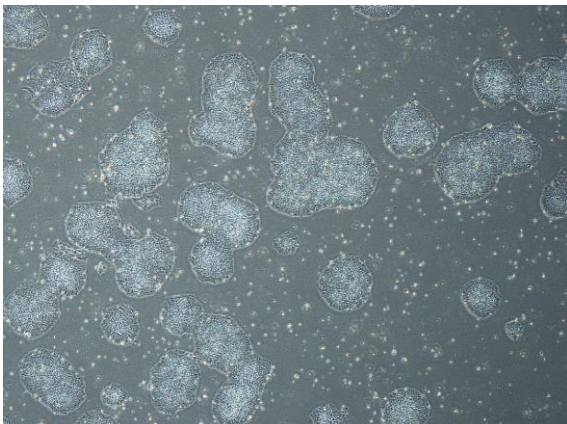
CiRA-j-1087-C: passage-3



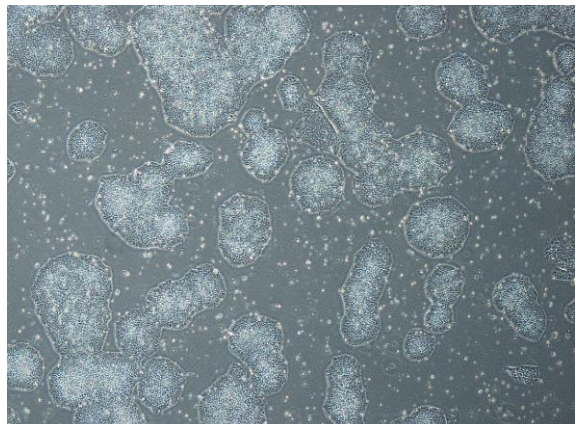
CiRA-j-1087-D: passage-3



CiRA-j-1087-E: passage-3



CiRA-j-1087-F: passage-3



(All images were captured at 4x magnification)